

Primavera P6 Training

Hybrid learning program

Learn from the experts at IP System 3



Over twenty-five years of experience with Primavera software has enabled us to be recognized experts in training, consulting and implementing Oracle Primavera software

Master Oracle Primavera P6 with our unique IP System 3 training class

Combines foundation, intermediate and advance topics into a three day training event

We actually use the software to plan/schedule projects for clients. We feel your pain. Many people purchase Primavera P6 with the intention of trying to figure out it on their own. They find out very quickly that it is not as easy as it may seem. Users transitioning from P3, SureTrak or even Microsoft Project face an even bigger challenge. They have a preconceived notion of what the program should be like but end up completely frustrated.

Don't spend countless hours trying to learning Primavera P6 on your own. Don't attend multiple classes. Allow us to teach you the tools to master this vast and complex project planning/scheduling software in just one three day training session. Our unique three-day training program will enable users from various industries to quickly unlock the power of this state-of-the-art software, allowing them to rapidly realize a return on their learning investment.

Learn about such topics as:

- ▶ Importing MS Project, P3/SureTrak files
- ▶ Creating projects quickly using fragnets
- ▶ Building effective work breakdown structures
- ▶ Work breakdown vs. Activity codes
- ▶ Creating and assigning work calendars
- ▶ Creating and assigning activity codes
- ▶ Defining project work tasks
- ▶ Mastering project baselines
- ▶ Tracking change events
- ▶ Proper progress updating techniques

Who should take the IP System 3 hybrid P6 training class?

New users, transitional users, existing users...

Whether you are new to Primavera P6 or are transitioning from Microsoft Project, Primavera P3 or Suretrak, this training class will allow you to ramp-up quickly on the software. Students attending our class come from various backgrounds such as:

- Construction
- Utilities
- Nuclear
- Pharmaceutical
- Oil and Gas
- Chemical
- IT/High Tech
- Defense
- Transportation

Course level: Basic to Intermediate/Transitional

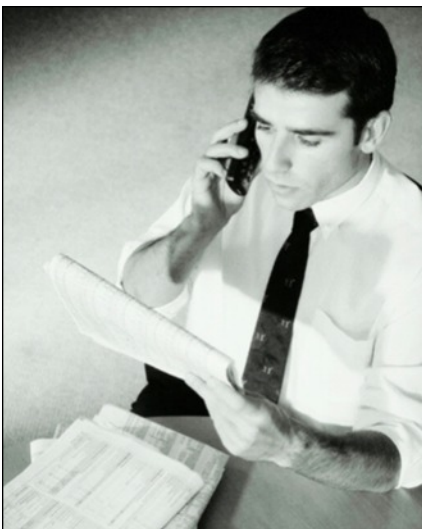
Targeted roles: Contractors, government agencies, turn-around/shutdown managers, IT project managers, planners/schedulers, US Army Corp/GSA representatives, subcontractors, engineers/architects or any other organizations required to submit/review/approve Primavera schedules.

Course length: 3 days

Prerequisite: Basic computer knowledge, project management fundamentals, knowledge of

Project Planners/Schedulers

Creates and manages project plans and schedules for an organization. Usually found in larger companies and agencies with a dedicated planner/scheduling department.



Project Managers

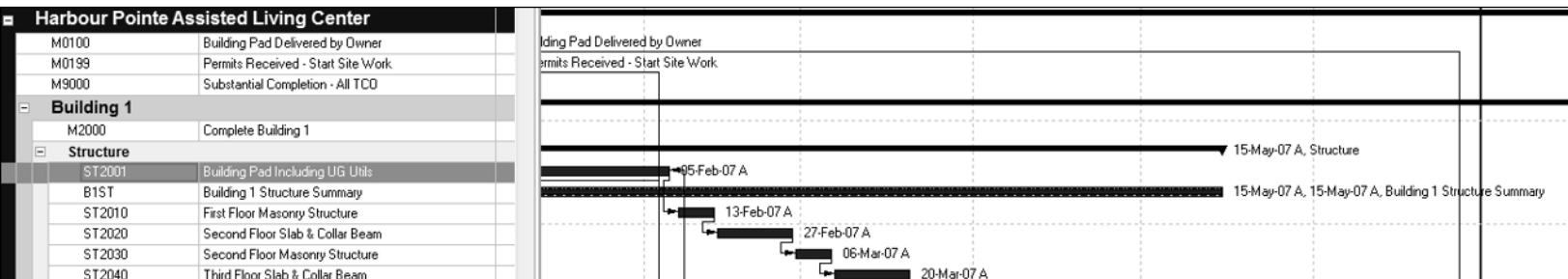
Small to mid-size companies often time rely on project managers to create and manage the project schedule.



Project Engineers

Project teams often include a project engineer. Project plans and schedules are often developed and managed by the project engineer.





Good project plans/schedule always start with a sound structure. Our class teaches the techniques of good sound structure enabling students to move to the next level when necessary.

What topics will be discussed by our IP System 3 instructors

The topics give a comprehensive overview of Primavera P6 Professional functionality

- Project Planning and Scheduling
- Creating a Project Plan in P6
- P6 Data Structures, Navigation and Layouts
- Project Creation Methods; new, copy/paste, importing
- Creating what-if projects using the reflection process
- Defining Calendars
- Defining Activity Codes and other project breakdown structures
- Creating the Work Breakdown Structure
- Understanding the different activity types and settings
- Adding Activities
- Using MS Excel to modify project data
- Creating Relationships and the Project Schedule Framework
- Assigning Constraints
- CPM Scheduling Theory and P6 Schedule Calculations
- Working with Electronic Documentation
- Formatting P6 Schedule Data to effectively communicate project information
- Working with P6 Resource Roles and Resource Categories
- Assigning Resources
- Analyzing Resource Optimization and Utilization
- Cost-Loading a Primavera Schedule
- Project Plan Optimization and the Triple Constraint
- Defining critical activities via Longest Path or Total Float
- Project Baselines and Version Control in P6
- Creating PDF Outputs for Communicating Project Details
- Capturing Project Progress using Various Methods such as Spreadsheets and PDF's
- Updating the Project Schedule
- Exporting projects

Enterprise level functionality

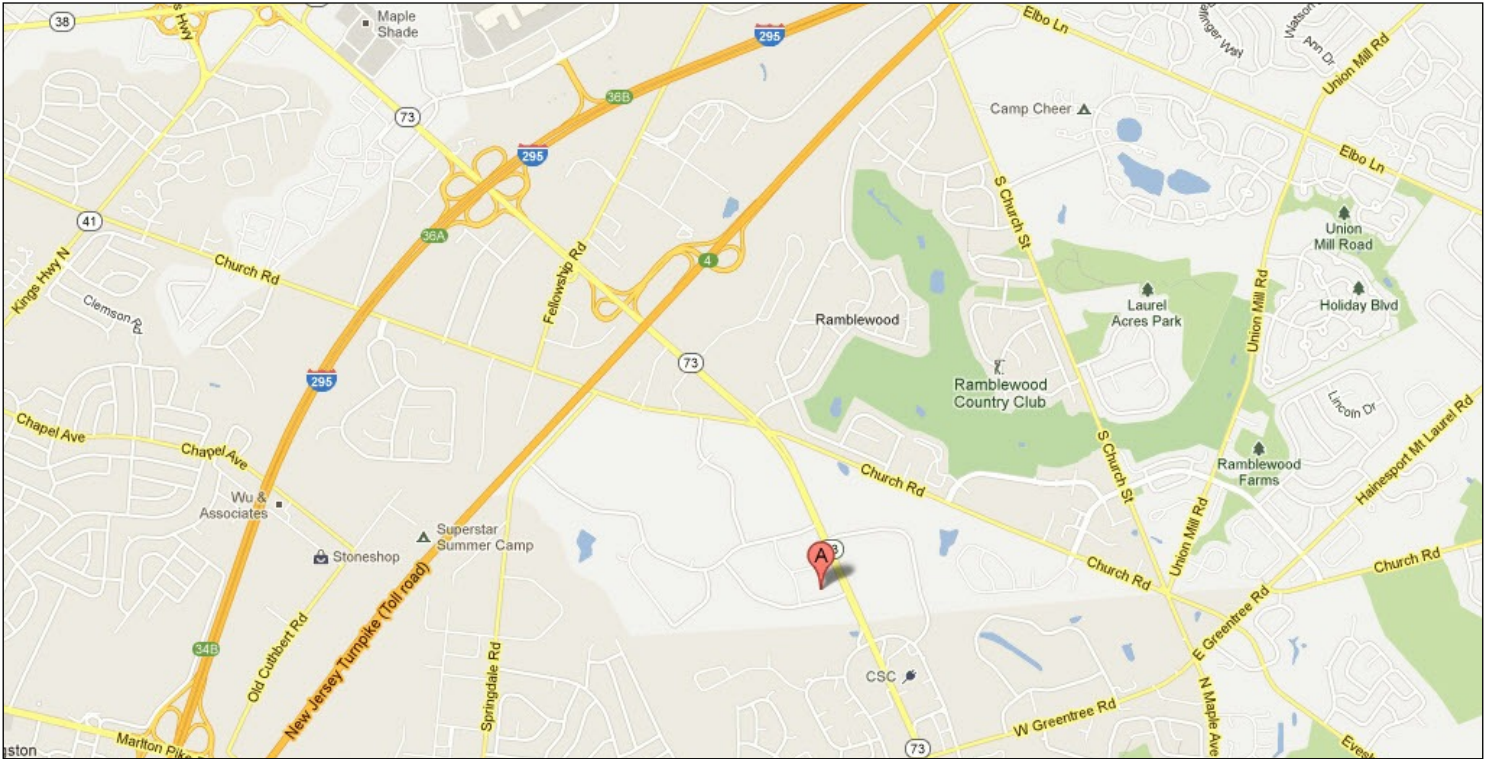
Functionality at this level controls global level coding, calendars and resources. Project level structures such as the Enterprise Project Structure (EPS) and the Organizational Breakdown Structure are also managed here. These are tied closely to security and permissions.

Activity-based schedules

Most organizations utilize activity-based schedules. These schedules focus on sequencing tasks based upon a project delivery method defined by the plan creator. Creating a sound structure is important. Using the Work Breakdown Structure in conjunction with activity codes enables users to maximize the benefits of P6.

Resource-loaded schedules

Labor, non-labor (equipment) and materials are defined as resources categories in P6. Assigning resources to tasks in P6 allows organizations to determine resource utilization needs and costs. Establishing the correct activity type, duration type, percent complete type at the activity level helps the users accurately portray project data.



A - Our training facility is conveniently located just off Exit 4 of the NJ Turnpike in southern New Jersey, only minutes from Philadelphia.

IP System 3 Class logistics

- Offered in conjunction with Evans Technology, an Oracle Platinum Partner, Global Project Management (PM), an Oracle Gold Partner and CDP, an Oracle Gold Partner.
- We are a Globally Registered Education Provider with the Project Management Institute (www.pmi.org) which allows us to award PDU's and CEU's.
- NY, NJ, PA and DE training at your location is available
- Public classes will be taught at the Hampton Inn, Mount Laurel. Students can utilize an \$89/night room rate.
- Instructors have over fifteen years of experience training students on Primavera software
- We actually use the Primavera P6 software we teach as part of CPM scheduling services
- Classes start at 9:00 AM and end around 4:00 PM
- Each class has two 15 minute breaks, one in the morning and the second one in the afternoon
- Each class has a 1 hour lunch
- All classes include breakfast and lunch
- Our New Jersey location includes free parking behind the building in a secured parking lot
- All classes include a 400 plus page P6 training guide (public P6 classes only) for each student
- All students will have a workstation with fully-functional classroom software
- Can be taken in conjunction with Rutgers University's Project Management Dual Certificate Program
IP System 3, LLC

Monthly public class training

Primavera P6 training is held monthly at our training facility located at:

Hampton Inn/ Mt Laurel
5000 Crawford Place
Mount Laurel, NJ 08054

Training at your onsite location

Training can be held at your location. We supply training laptops and training material. You supply the conference room.

Training at an off-site location

Eliminate office distractions by conducting training at a hotel, conference center or even our training facility. We supply the training laptops and material.



Testimonials...

What past students are saying about our class

- Thanks again for a great course. I learned a lot and I'm confident it will really help in starting up a solid Turnaround Department.
- I would like to thank you again for conducting an outstanding 3-day session on the Primavera software. I - not knowing anything about the tool - found it very easy to learn. I do believe that it was in part of your patience with us and your excellent teaching style...
- I wanted to tell you I found the Primavera training class to be well designed. I found your broad knowledge of the PM industry and professional presentation of the material to be relevant and engaging. I wish you continued success. Thank you!
- I would like to thank you for this inspiring class and I wanted to say I enjoyed it immensely. I was amazed at the capabilities of the program...

IP System 3

100 Dobbs Lane, Suite 104 Cherry Hill, New Jersey 08034 • Tel: (609) 299-1585 • mkehoe@ipsys-3.com
www.ipsys-3.com